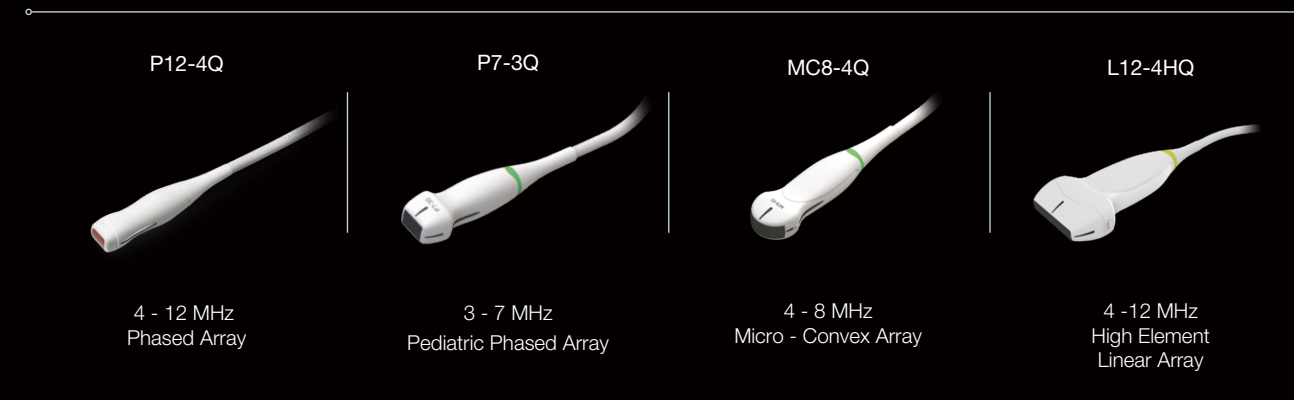


Transducers



About Edan

Edan is a healthcare company dedicated to improving the human condition around the world by delivering value-driven, innovative and high-quality medical products and services. For over 20 years, Edan has been pioneering a comprehensive line of medical solutions that address a broad range of healthcare practices including:

- Diagnostic ECG
- Patient Monitoring
- OB/GYN
- Ultrasound Imaging
- Point-of-Care Testing
- *In-Vitro* Diagnostics
- Veterinary

Healthcare professionals around the world depend on Edan's breakthrough medical technologies and outstanding customer support.



Global Headquarters:
Edan Instruments, Inc. | 15 Jinhui Road, Pingshan District, Shenzhen
518122 P.R. China | +86.755.26898326 | www.edan.com | info@edan.com

U.S. and Canada inquiries:
EDAN Diagnostics, Inc. | 9918 Via Pasar, San Diego, CA 92126
+1.858.750.3066 | www.edandiagnostics.com | edan-info@edandiagnostics.com

© Edan Instruments, Inc. All rights reserved. Features and specifications are subject to change without prior notice. No reproduction, copy or transmission may be made without written permission. Not all products or features are available in all countries, contact Edan for local availability.

ENG-US-AX9 VET
V1.0-20231012

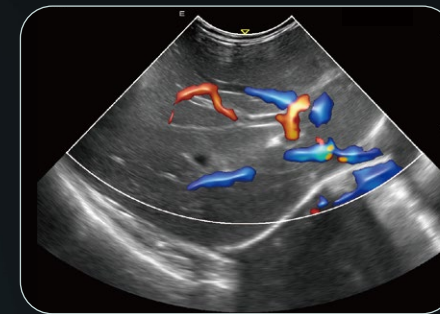
Tap the Full Potential in an Exclusive Touch

Acclarix™ AX9 VET
Veterinary Diagnostic Ultrasound System

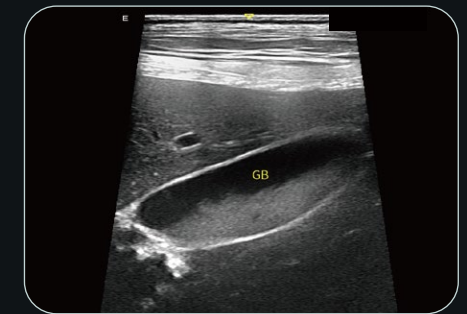


Elegant Fusion of Specialty and Flexibility

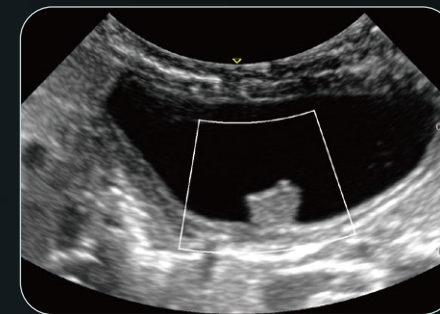
The remarkable Acclarix AX9 VET compact ultrasound system delivers a powerhouse combination of features in a remarkably small package- making it the ideal choice for tight environments. The Acclarix AX9 VET system has been designed from the ground up with a relentless focus on delivering unexpected levels of innovation and performance at a price point that is equally surprising.



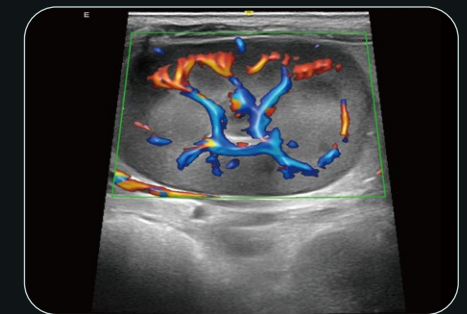
Canine Liver-Hepatic Blood Flow



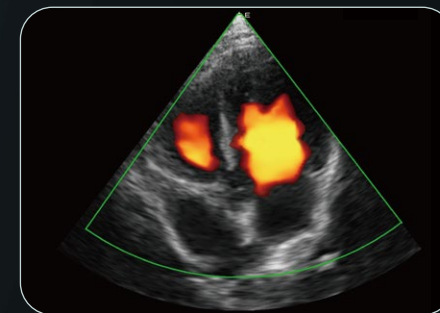
Canine Gall Bladder-Sludge Deposition



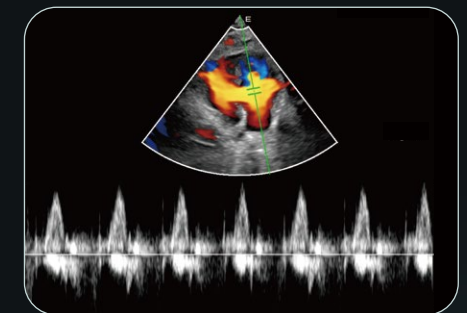
Canine Urology-Bladder Polyp



Feline Kidney-Renal Flow



Canine Heart-4 Chambers



Feline Heart-Pulse Wave

Stunning Clarity

SynSight Zone Sonography Platform

- Powerful image processing hardware and high-performance beam-forming algorithm, greatly Improve contrast and lateral resolution
- Dynamic focusing on full-field, no physical focus adjustment required, excellent image uniformity, remarkable consistency and penetration